



[www.arranviewlodges.co.uk](http://www.arranviewlodges.co.uk)

# WHO WE ARE

Are you ready to embrace a life of serene luxury? Look no further than ArranView Luxury Lochside Lodges, where tranquillity meets modern comfort. Nestled within the breathtaking Ayrshire landscape, our exclusive lodges offer a peaceful haven for those seeking the perfect place to call home.



Your peace of mind is our priority, which is why we've built our lodges to stand the test of time. The materials and construction methods we employ are chosen for their durability, ensuring your investment remains as solid as the day you move in.

Step into a world of innovative design that seamlessly marries comfort and aesthetics. Our lodges are thoughtfully laid out to optimize space and light, providing you with an inviting living environment. Large windows, and efficient insulation are just a few of the design elements that make our lodges truly exceptional.

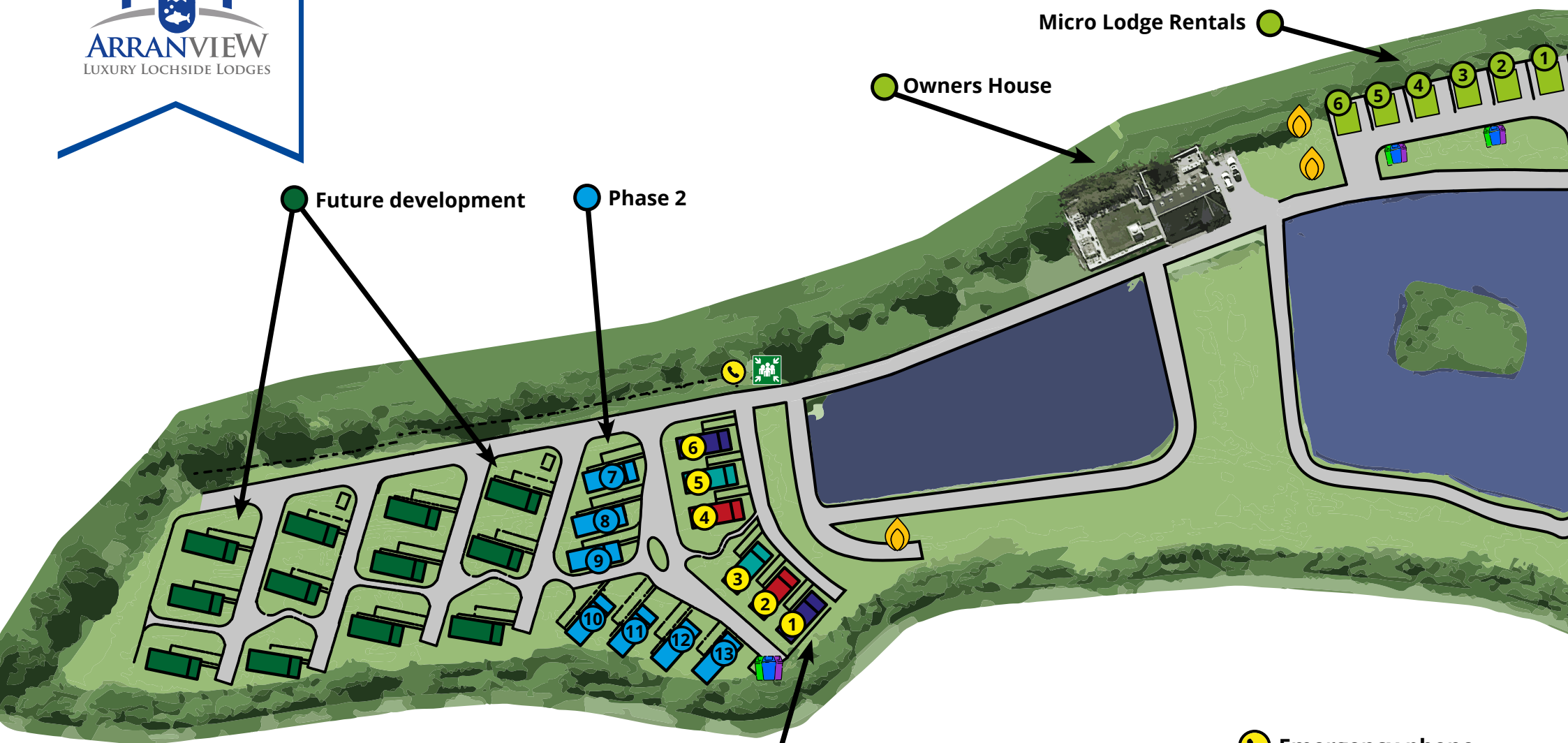
The journey of creating each lodge is one of passion and dedication. Our skilled craftsmen pour their expertise into every inch, ensuring that your lodge is a testament to their commitment to perfection.

Our lodges are designed to harmoniously integrate into the stunning Ayrshire landscape. The architecture pays homage to the beauty of the environment while offering you a retreat that feels like it's a part of nature itself.

ArranView isn't just a place to live; it's a statement of your commitment to quality living. When you choose us, you choose a home that's built with passion, expertise, and a dedication to providing you with a haven of tranquillity and luxury.

Are you ready to experience the exceptional quality of life and serene living at ArranView? Contact us today to arrange a tour of our lodges. Let us show you first-hand why choosing ArranView is choosing a life of enduring comfort and luxury living.





Future development

Phase 2

Owners House

Micro Lodge Rentals

- Phase 1
- Alderney Luxury Lodge
- Classic Luxury Lodge
- Kingfisher Luxury Lodge

- Emergency phone
- Fire Assembly Point
- Storage of Liquefied Petroleum Gas (LPG)
- Refuse Disposal



● ArranView Cafe Bistro

● ArranView Fishery Office

● Main Entrance



An aerial photograph of a residential development. The scene features several modern, single-story lodges with grey roofs and light-colored walls, arranged around a central paved area. A large, calm pond is situated in the upper middle of the frame, with a paved path leading to it. The surrounding landscape is lush green, with trees and open fields. In the background, a traditional white house with a grey roof is visible. The overall atmosphere is peaceful and well-maintained.

# OUR PORTFOLIO

We take immense pride in delivering not just a home, but a masterpiece. Our lodges are crafted with meticulous attention to detail, reflecting a blend of timeless design and modern functionality. From the foundation to the finest finishing touches, every aspect of your lodge exudes quality and excellence.

# COMPLETED PLOTS

## ALDERNEY



**Lodge:** Alderney  
**Size:** 45 x 20  
**Location:** Plot 1 & 6  
**Bed:** 2 Double Bedrooms

## CLASSIC



**Lodge:** Classic  
**Size:** 45 x 20  
**Location:** Plot 2 & 4  
**Bed:** 2 Double Bedrooms

## KINGFISHER



**Lodge:** Kingfisher  
**Size:** 45 x 20  
**Location:** Plot 3 & 5  
**Bed:** 2 Double Bedrooms



[View lodge specification](#)



# ALDERNEY

LODGES 1 & 6



OPEN PLAN LIVING AREA



LODGE 1 LOCHAN VIEW



DECKING



DECKING

## 2 BEDROOM, MASTER ON SUITE, UTILITY ROOM

**Lodge:** Aldernery  
**Size:** 45 x 20  
**Location:** Plot 1 & 6  
**Bed:** 2 Double Bedrooms

- Fully Furnished
- Decking included
- Built to residential standard - BS3632



KITCHEN



OPEN PLAN LIVING AREA



OPEN PLAN LIVING AREA



DINING



UTILITY



BATHROOM

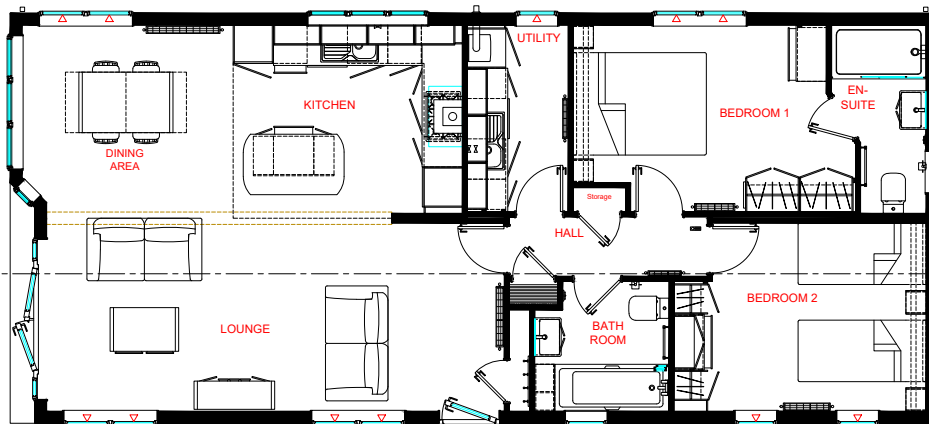
MASTER BEDROOM



BEDROOM 2



EN-SUITE



EN-SUITE





[View lodge specification](#)



**CLASSIC**  
LODGES 2 & 4



OPEN PLAN LIVING AREA



DECKING



GARDEN

## 2 BEDROOM, MASTER ON SUITE, UTILITY ROOM

**Lodge:** Classic  
**Size:** 45 x 20  
**Location:** Plot 2 & 4  
**Bed:** 2 Double Bedrooms

- Fully Furnished
- Decking included
- Built to residential standard - BS3632



DINING



KITCHEN



LOUNGE



LOUNGE



KITCHEN



UTILITY



BATHROOM

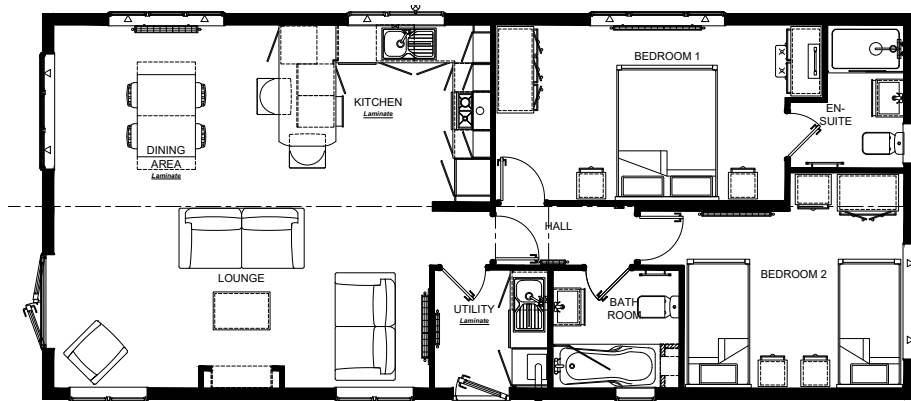
MASTER BEDROOM



MASTER BEDROOM



BEDROOM 2



EN-SUITE





[View lodge specification](#)



# KINGFISHER

LODGES 3 & 5



OPEN PLAN LIVING AREA



DECKING



OPEN PLAN LIVING AREA

## 2 BEDROOM, MASTER ON SUITE, UTILITY ROOM

**Lodge:** Kingfisher  
**Size:** 45 x 20  
**Location:** Plot 3 & 5  
**Bed:** 2 Double Bedrooms

- Fully Furnished
- Decking included
- Built to residential standard - BS3632



DINING



KITCHEN



OPEN PLAN LIVING AREA



BATHROOM



KITCHEN



UTILITY



BATHROOM

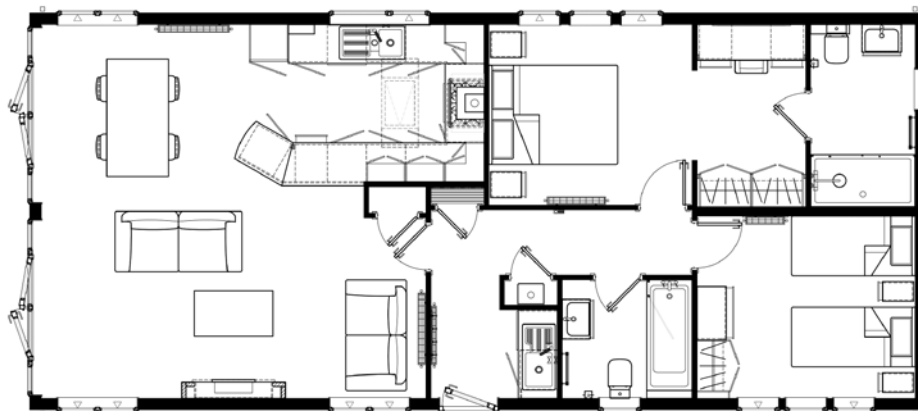
MASTER BEDROOM



BEDROOM 2



DRESSING AREA



EN-SUITE





# ARRANVIEW IS EXCELLENTLY APPOINTED, BENEFITING FROM A WIDE RANGE OF AMENITIES THAT CATER FOR EVERY NEED

## Ayrshire by Car

- Gateway To The Highlands
- Loudoun Leisure Centre (3 miles)
- Loudoun Golf Range (3.1 miles)
- Dean Castle Country Park (3.2 miles)
- Ayr Beach (16 miles)
- Troon Beach (12 miles)
- Scottish Wild Life Trust – Ayr Gorge (9.8 miles)
- Scottish Wild Life Trust – Nature Reserve (9.8 miles)

## Nearby facilities by Car

- Glasgow Airport (15.6 miles)
- Prestwick Airport (12 miles)
- Kilmarnock Town Centre (4.3 miles)
- East Kilbride Shopping Centre (11.7 miles)
- Silverburn Shopping Centre 12.5 miles
- A&E Hairmyres Hospital (10.8 miles)
- A&E Crosshouse Hospital (5.7 miles)
- 24 hour Tesco Extra Kilmarnock (4.8 miles)
- Coop /Tesco Superstore Galston (3 miles – open till 10pm)
- 24 hour Asda Superstore (4.6 miles)



# TESTIMONIALS



Graham and Eric have been in the hospitality industry for over 20 years. Our journey began with a vision to create a serene and inclusive community where people could reconnect with nature and cherish memorable moments with their loved ones. Over the years, we have consistently evolved, driven by our dedication to excellence and a commitment with customer service exceeding guest expectations.



“ **Most perfect stay (again)** We adore ArranView in every way. This was our 4th visit & will definitely be back again! Accommodations are always immaculate, staff are friendly & the owners go out of their way to ensure you have a fabulous stay. The food from the on-site bistro is also delicious! Can't wait to get back again!

Gillian

“ I would definitely recommend coming here for a wee getaway. The pod was absolutely gorgeous, was extremely clean! Booklet with instructions for certain things which not a lot of places do. The water, prosecco and personalised welcome sign was a really nice touch!

The hot tub was phenomenal obviously really well looked after. The lake with the bird life was gorgeous. I would certainly be back!

Rebekah

“ Just back from a 2 night stay at this amazing place. We stayed in one of the lodges and it was absolutely spotless, felt like it was brand new. Fully equipped with every you'd need. Hot tub ready for use at all times too. Already looking at coming back!

Amy

“ 5\* stay and service Me and my partner went for his birthday taking our 3 kids. We stayed in pod 9 and it was honestly the most beautiful lodge I've ever stayed in. The cleanliness was 5\*\* and the owner Graham was super helpful and very fast to respond to queries. The room was stunning and so homely. Definitely wish I booked two nights if it wasn't fully booked we definitely would've added another night on. I don't think I would go to any other site for lodges now. 100% recommend this stay for anyone looking. Worth every single penny and more.

Shaanan

“ We only stayed one night, but this was the best lodge of its kind we have stayed in during our week away. Great layout and use of space. Nice cafe where we got a bacon cob for breakfast. Very responsive hosts, meaning our needs were met without issue.

Sally

“ Just home from here and to be honest I didn't want to leave lodges are immaculately clean and every detail is thought of by the hosts all you need to take is food and drink the hot tubs are amazing and we will definitely be back in the summer.

Stuart



## ONSITE CAFE BISTRO

Located on site Arranview Cafe/Bistro serves fresh food daily. We offer in house dining and takeaway 6 days a week and are open late Friday and Saturday nights. Join us for breakfast, lunch or coffee and a cake.

Visit [www.arranviewcafebistro.com](http://www.arranviewcafebistro.com) to see our menus and book a table.

 01560 700552

 [arranviewcafebistro.com](http://arranviewcafebistro.com)



## Find out more

For further details or to book a viewing please contact Graham on [sales@arranviewlodges.co.uk](mailto:sales@arranviewlodges.co.uk) or call **0797 109 2021**.

A719, Moscow, East Ayrshire KA4 8PR

[www.arranviewlodges.co.uk](http://www.arranviewlodges.co.uk)

Sign up to register  
interest or reserve  
your plot.

